

Report of North East Divisional Community Safety Partnership

Report to Inner East Area Committee

Date: 21st June 2012

Subject: North East Divisional Community Safety Partnership Annual Report

Are specific electoral Wards affected?	<input checked="" type="checkbox"/> Yes	<input type="checkbox"/> No
If relevant, name(s) of Ward(s): Gipton/Harehills Killingbeck & Seacroft Burmantofts & Richmond Hill		
Are there implications for equality and diversity and cohesion and integration?	<input type="checkbox"/> Yes	<input checked="" type="checkbox"/> No
Is the decision eligible for Call-In?	<input type="checkbox"/> Yes	<input checked="" type="checkbox"/> No
Does the report contain confidential or exempt information?	<input type="checkbox"/> Yes	<input checked="" type="checkbox"/> No
If relevant, Access to Information Procedure Rule number: Appendix number:		

Summary of main issues

1. To update ward members of the overall performance of the North East Divisional Community Safety Partnership and Neighbourhood Policing Teams for 2011/12
2. To provide an overview of the work undertaken by the partnership within the locality to reduce crime and disorder

Recommendations

3. The Area Committee is asked to note the contents of this report of the North East Divisional Community Safety Partnership.
4. Members are asked to continue supporting the Divisional Community Safety Partnership in relation to prioritising and tackling Burglary Dwelling during 2012/13 through partnership work at neighbourhood level.

1 Purpose of this report

1.1 The report will focus on the following key issues:

- Update Members on progress and outputs of the Neighbourhood Management Tasking Arrangements
- Report on Thematic Sub Groups and activities
- Report on the Performance of the NE Police Division and partnership
- Summary of ward crime statistics, public confidence and user satisfaction
- Report on multi agency 'Operation Champions'
- Report on agreed community initiatives funded via Proceeds of Crime confiscations (POCA).

2 Background information

This report provides Members of the Area Committee with an overview of the performance of the North East Divisional Community Safety Partnership and ward based Neighbourhood Policing Teams. It will also include details of the key initiatives that have been delivered in local communities to reduce crime and disorder. The report focuses upon the period 1st April 2011 to 31st March 2012.

3 Main issues

3.1 Performance Framework

3.2 The Divisional Community Safety Partnership (DCSP) will continue to develop activity and management performance against strategic outcomes of the city, defined by The Safer and Stronger Communities Board Partnership plan 2011-2015 which will focus on delivering the following strategic priorities:

- Reducing crime levels and its impact across Leeds
- Effectively Tackle and Reduce Anti-social behaviour in our Communities

3.2 We are currently awaiting ratification of the Safer Leeds performance targets and performance framework for 2012/13 (North East Police Divisional Targets are outlined in Appendix A)

3.3 Attached is an updated structure chart for the North East Divisional Community Safety Partnership (see Appendix B) with details of the relevant lead officers. The structure is continuously reviewed to ensure delivery against new priorities

3.4 **Operation Champion** - Several 'Multi agency operation days of action' have been carried out across the ward during 2011/12 and have been based around themes and deployed into areas of concern. Due to the successful embedding of partnership work and daily problem solving into core business and improved communication between partner agencies, the need for intensive six weekly planned operations has eased . We will continue to deliver operations during 2012/13 with a minimum requirement of four operations per year per Neighbourhood policing team

3.5 **POCA**

3.6 Following the success of the project over the last four years , the North East Division allocated a total of £38,145 funding confiscated from criminals under the Proceeds of Crime Act to the Divisional Community Safety Partnership during 2011/12 to continue to support local groups with community projects/activities. In total, across the whole division, we approved and funded 99 applications and spent £28,519 . The remaining balance was carried forward to the new financial year and has been spent during April/May . We have received numerous emails showing appreciation and thanks for support. Information regarding the awards continue to be advertised in the neighbourhood management / Neighbourhood Policing Team newsletters and on the police Neighbourhood Policing Team websites. We will be continuing the scheme into 2012/13 Appendix C provides a summary of projects funded in the Inner East area.

3.7 **Public Confidence and Satisfaction**

3.8 North East Leeds continues to have the highest Public Confidence in Local Policing during 2011/12 at 62.0 % (March 2011) compared with the West Yorkshire force average of 54.6 % .

3.9 Operation Confidence commenced in February 2009 and is a contributing factor to the high rates of public confidence. The North East Division produces 11 neighbourhood management newsletters detailing partnership activity around crime and grime within the Neighbourhood Policing Team and delivers to 128,000 households three times a year. Feedback from residents continues to be positive and illustrates they are pleased to be kept informed around crime and grime issues. Funding has been secured for 2012/13 and contributions have been agreed by North East Police Division, East North East Homes, Safer Leeds Partnership and Aire Valley Homes.

3.10 **Joint Police Community Safety Officer Protocol between Leeds City Council and West Yorkshire Police**

3.11 In April 2011, the Council agreed to extend the existing arrangement with West Yorkshire Police Authority to retain the level of Police community safety officers (PCSO'S) in Leeds. The investment by the Council was awarded on the basis of strengthening arrangements between PCSOs, Neighbourhood Policing Teams and Leeds City Council Services. One particular aim is to support the improved delivery of locally identified environmental priorities and this was supported at the Council's Executive Board in September 2011.

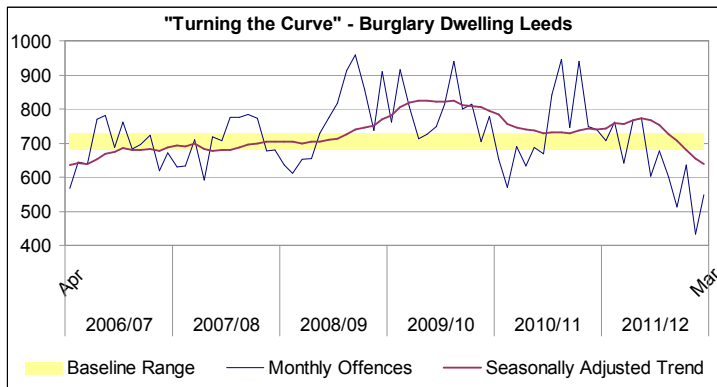
3.12 There are strong links between crime and disorder and environmental issues and this protocol is aimed at ensuring the quality of the local environment is incorporated into the work of crime reduction partnerships. It is important that the fear of crime, heightened by issues such as graffiti, litter and abandoned vehicles, is addressed. This protocol provides a coordination and tasking mechanism for Neighbourhood Policing Teams , Police community safety officers and Council Officers to jointly deliver better outcomes in respect of environmental issues and enforcement in localities. The North East Divisional community safety partnership are fully supporting the implementation of the newly agreed 'Enviromental Improvement Zones. In North East the PCSOs and neighbourhood policing teams are playing a pro-active and re-active role in addressing environmental issues . In Feb /March 2012 the East North East environmental action team have delivered a six week training input on Divisional

training days to all PCSO's to ensure that they have a greater knowledge and understanding of environmental issues to enable them to contribute effectively. In addition the neighbourhood policing teams have teamed up with East North East Locality team staff to work together on monthly operations targeting waste carriers moving across our areas. This has been done by setting up road checks and routine stopping of waste carrier vehicles in order to complete checks on such vehicles.

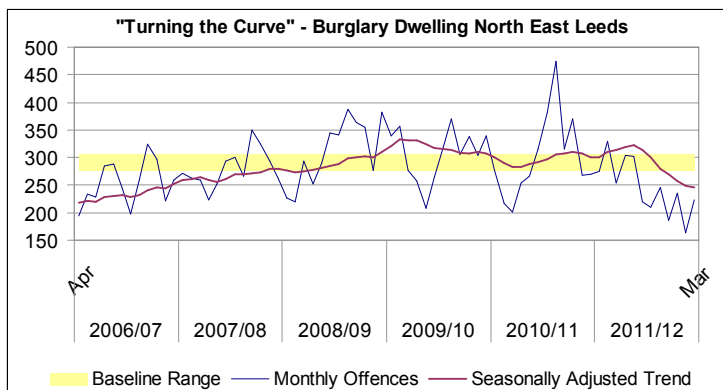
3.13 Burglary Dwelling

3.14 Burglary Dwelling remains a key pressure in relation to allocation of resources both staffing and financial. Tackling burglary dwelling remains the key priority within the Division and across the whole of Leeds, we are working closely with Safer Leeds Strategic burglary group and partner agencies to maximise opportunities for closer working and sharing good practise and continue to deliver initiatives at a local neighbourhood level.

3.15 Overall a very successful Year, burglary dwellings are down 13.6% across the whole city on the same period last year (1207 less offences)



3.16 Overall Year to date offences for North East Leeds are down 18.4% on the same period last year. (669 less offences)



3.17 Ward Risk Matrix

3.18 The below table illustrates In Leeds there are currently nine strategic localities of concern. Within the Inner East Committee area all three wards are currently highlighted as strategic areas of concern.

Ward	Apr-11	May-11	Jun-11	Jul-11	Aug-11	Sep-11	Oct-11	Nov-11	Dec-11	Jan-12	Feb-12	Mar-12	12 Month Total	12 Month % Change
Hyde Park & Woodhouse	Very High	Very High	High	High	High	High	High	High	High	High	High	High	597	36.0%
Bramley & Stanningley	High	High	High	High	High	High	High	High	High	High	High	High	420	8.5%
Burmantofts & Richmond Hill	High	High	High	High	High	High	High	High	High	High	High	High	407	-29.5%
Headingley	High	High	High	High	High	High	High	High	High	High	High	High	407	3.3%
Armley	High	High	High	High	High	High	High	High	High	High	High	High	390	-34.6%
Gipton & Harehills	High	High	High	High	High	High	High	High	High	High	High	High	383	0.3%
Killingbeck & Seacroft	High	High	High	High	High	High	High	High	High	High	High	High	361	-16.2%
Kirkstall	High	High	High	High	High	High	High	High	High	High	High	High	358	-32.7%
Chapel Allerton	High	High	High	High	High	High	High	High	High	High	High	High	309	-29.1%
Cross Gates & Whinmoor	High	High	High	High	High	High	High	High	High	High	High	High	298	5.7%
Farnley & Wortley	High	High	High	High	High	High	High	High	High	High	High	High	290	-16.9%
Temple Newsam	High	High	High	High	High	High	High	High	High	High	High	High	248	-28.5%
Calverley & Farsley	High	High	High	High	High	High	High	High	High	High	High	High	246	0.8%
Pudsey	High	High	High	High	High	High	High	High	High	High	High	High	245	7.9%
Weetwood	High	High	High	High	High	High	High	High	High	High	High	High	245	-17.2%
Moortown	High	High	High	High	High	High	High	High	High	High	High	High	238	-10.2%
Roundhay	High	High	High	High	High	High	High	High	High	High	High	High	225	-19.6%
Beeston & Holbeck	High	High	High	High	High	High	High	High	High	High	High	High	212	-4.9%
City & Hunslet	High	High	High	High	High	High	High	High	High	High	High	High	206	8.4%
Middleton Park	High	High	High	High	High	High	High	High	High	High	High	High	193	4.3%
Alwoodley	High	High	High	High	High	High	High	High	High	High	High	High	163	-12.8%
Adel & Wharfedale	High	High	High	High	High	High	High	High	High	High	High	High	161	0.0%
Horsforth	High	High	High	High	High	High	High	High	High	High	High	High	156	-37.6%
Morley North	High	High	High	High	High	High	High	High	High	High	High	High	141	-10.2%
Morley South	High	High	High	High	High	High	High	High	High	High	High	High	109	-12.1%
Rothwell	High	High	High	High	High	High	High	High	High	High	High	High	99	-26.1%
Garforth & Swillington	High	High	High	High	High	High	High	High	High	High	High	High	90	-31.3%
Guiseley & Rawdon	High	High	High	High	High	High	High	High	High	High	High	High	87	-30.4%
Harewood	High	High	High	High	High	High	High	High	High	High	High	High	87	-26.9%
Otley & Yeadon	High	High	High	High	High	High	High	High	High	High	High	High	87	-42.0%
Kippax & Methley	High	High	High	High	High	High	High	High	High	High	High	High	77	-24.5%
Ardsley & Robin Hood	High	High	High	High	High	High	High	High	High	High	High	High	74	-18.7%
Wetherby	High	High	High	High	High	High	High	High	High	High	High	High	73	-6.4%

Colour Key

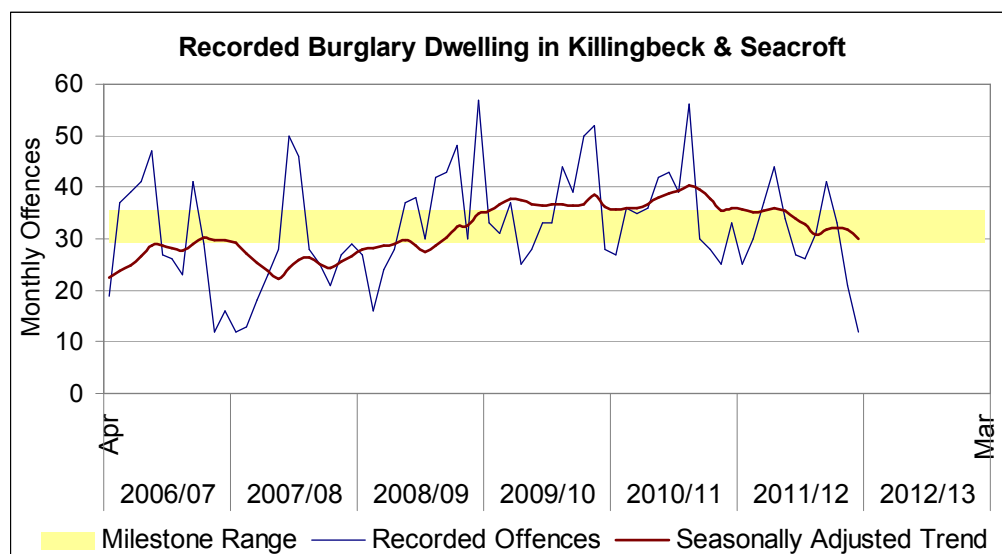
- Very High Concern
- High Concern
- Some Concern
- Low Concern
- Strategic Area

3.19 Killinbeck and Seacroft

3.20 The Killingbeck and Seacroft ward still remains within the top 9 strategic priority areas An outcome based accountability session is planned for May 2012 with key stakeholders and a 12 month action plan will be developed around key strands including offender management, stolen goods market, reducing victimisation , crime reduction and value for money. Safer Leeds have allocated 7.5k funding to support partnership activity during 12/13

3.21 During 2011/12 East North East homes have offered burglar alarm systems to all victims of burglary and also additional target hardening to any vulnerable or repeat victims , this has provided great reassurance to residents . We successfully run a sash jammer project across the ward funded by neighbourhood management ward tasking to provide additional door security to dwellings (200) fitted with euro profile locks . Evidence illustrated that several attempts were made on properties we had target hardened via the locks but the burglar was unable to get past the sash jammers.

3.22 Milestone 1 was to return to the lower level of the Milestone Range, at 29 offences per month this would equate to 348 offences per year, a reduction of 18.7% from the annual offence total for 2010/11.



3.23 Progress April 2011 to March 2012

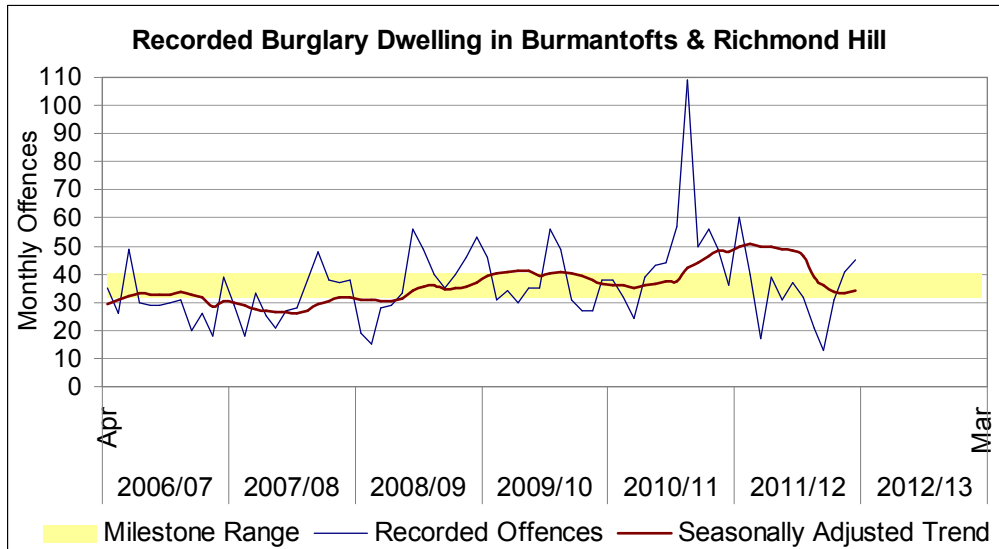
3.24 Offences were 16% lower between April 2011 and March 2012 compared with the same period last year. The seasonally adjusted average is at the lower end of the Milestone Range. The year to date average is 30 offences per month and Killingbeck and Seacroft ward narrowly missed reaching the Milestone 1 level in 2011/12.

Month	Offences	Average To Date
Apr-11	25	25
May-11	30	28
Jun-11	37	31
Jul-11	44	34
Aug-11	34	34
Sep-11	27	33
Oct-11	26	32
Nov-11	31	32
Dec-11	41	33
Jan-11	33	33
Feb-11	21	32
Mar-11	12	30
Year to Date	361	30

Month	Cumulative 2011-12	Cumulative 2010-11	Change
Apr	25	27	-2
May	55	63	-8
Jun	92	98	-6
Jul	136	134	2
Aug	170	176	-6
Sep	197	219	-22
Oct	223	258	-35
Nov	254	314	-60
Dec	295	344	-49
Jan	328	372	-44
Feb	349	397	-48
Mar	361	430	-69
% Change Year to Date -16%			

3.25 **Burmantofts and Richmond Hill**

- 3.26 An outcome based accountability session was delivered in September ,2011 with key stakeholders and an action plan was developed around key strands including offender management, stolen goods market, reducing victimisation and crime reduction . Since the implementation of the action plan we have delivered three phases of a target hardening initiative on a fortnightly basis in the top 40 streets identified across the ward , we were successful in securing funding from East North East Homes for ALMO properties and secured 7.5k locality funding from Safer Leeds for owner occupiers and the private rented sector . The initiative has been led by the neighbourhood policing team , east north east area management team East North East Homes and Leeds Anti Social Behaviour Team officers . The programme has included free crime prevention materials such as timer switches, trembler alarms and crime prevention advise to residents specific to the modus operandi . We were also successful in a bid to East north East Homes area panel for match funding which funded a burglary seminar event that was held on 1st March 2012 at St Cyprians Church to give people practical advice on avoiding becoming a victim of burglary. Safer Leeds, West Yorkshire Police and Trading Standards all gave presentations at the event.
- 3.27 East North East homes have offered burglar alarm systems to all victims of burglary and also additional target hardening to any vulnerable or repeat victims , this has provided great reassurance to residents .
- 3.28 In November 2011 East North East Homes in partnership with LeedsWatch allocated funding to provide additional security patrols across Almo hot spot areas particularly in the Burmantofts and Richmond Hill ward The patrols were conducted between 12 midnight at 4am and were directed by the tactical intelligent assessment at North East police division . Initial evaluations highlighted that no burglaries had occurred in the patrolled streets whilst patrols were occurring and the initiative was a contributing factor to the reduction in burglaries within seasonal trends.
- 3.29 Milestone 1 is to return to the upper level of the Milestone Range, at 40 offences per month this would equate to 480 offences per year, a reduction of 16.8% from the annual offence total for 2010/11.



3.30 Progress April 2011 to March 2012

3.31 Offences were 29% lower between April 2011 and March 2012 compared with the same period last year. The seasonally adjusted average is now at the lower end of the Milestone Range. The year to date average is 34 offences per month and Burmantofts and Richmond Hill ward attained Milestone 1 in 2011/12.

Month	Offences	Average To Date
Apr-11	60	60
May-11	40	50
Jun-11	17	39
Jul-11	39	39
Aug-11	31	38
Sep-11	37	37
Oct-11	32	37
Nov-11	21	35
Dec-11	13	32
Jan-11	31	32
Feb-11	41	33
Mar-11	45	34
Year to Date	407	34

Month	Cumulative 2011-12	Cumulative 2010-11	Change
Apr	60	38	22
May	100	70	30
Jun	117	94	23
Jul	156	133	23
Aug	187	176	10
Sep	224	220	4
Oct	256	277	-21
Nov	277	386	-109
Dec	290	436	-146
Jan	321	492	-171
Feb	362	541	-179
Mar	407	577	-170
% Change Year to Date -29%			

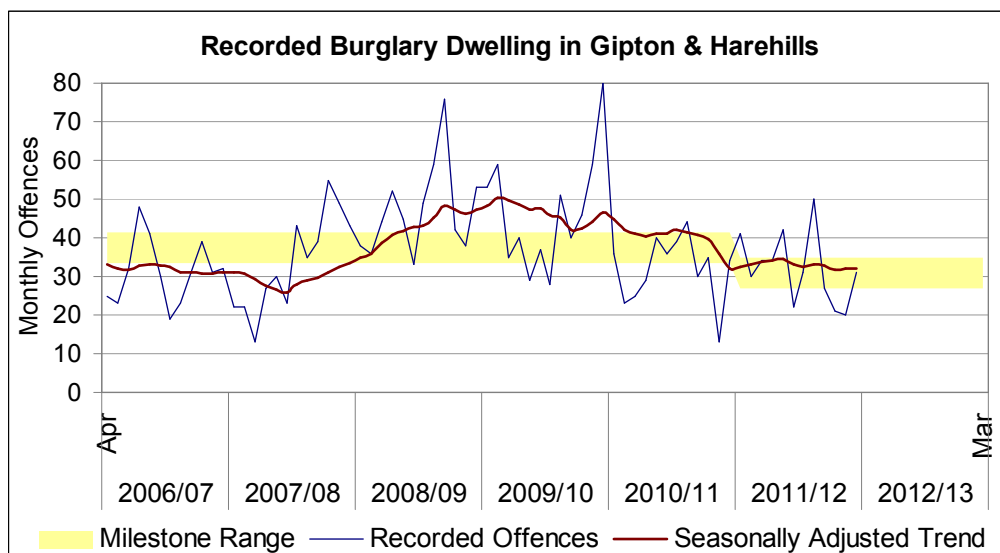
3.32 Gipton & Harehills Ward

3.33 We have been successful in sustaining the reductions in burglary dwelling following partnership activity in 09/10. The ward still remains within the top 9 strategic localities of concern. An outcome based accountability session is planned for September 2012 with key stakeholders and a 12 month action plan will be developed around

key strands including offender management, stolen goods market, reducing victimisation, crime reduction and value for money. Safer Leeds have allocated 7.5k to support additional partnership activities. We successfully run a sash jammer project across the Harehills part of the ward funded by neighbourhood management ward tasking to provide additional door security to dwellings (200) fitted with euro profile locks. Evidence illustrated that several attempts were made on properties we had target hardened via the locks but the burglar was unable to get past the sash jammers.

3.34 Milestones

3.35 The stepping down of the Milestone Range in 2011/12 reflects the improvements achieved in 2010-11, when offences in the ward reached Milestone 1. Milestone 2 is to reach the lower level of the new Milestone Range, at 27 offences per month this would equate to 324 offences per year, a reduction of 15.6% from the annual offence total for 2010/11.



3.36 Progress April 2011 to March 2012

3.37 There was 1 fewer offence between April 2011 and March 2012 compared with the same period last year. The seasonally adjusted average is in the middle of the Milestone Range. The year to date average is 32 offences per month, and improvements are necessary for Gipton and Harehills ward to achieve the Milestone 2 level.

Month	Offences	Average To Date
Apr-11	41	41
May-11	30	36
Jun-11	34	35
Jul-11	34	35
Aug-11	42	36
Sep-11	22	34
Oct-11	31	34
Nov-11	50	36
Dec-11	27	35
Jan-11	21	33
Feb-11	20	32
Mar-11	31	32
Year to Date	383	32

Month	Cumulative 2011-12	Cumulative 2010-11	Change
Apr	41	36	5
May	71	59	12
Jun	105	84	21
Jul	139	113	26
Aug	181	153	28
Sep	203	189	14
Oct	234	228	6
Nov	284	272	12
Dec	311	302	9
Jan	332	337	-5
Feb	352	350	2
Mar	383	384	-1
% Change Year to Date 0%			

3.38 Most Active/Amber Nominals/Burglary Group

3.39 Following a short pilot during the summer of 2011 we have now implemented a new sub group of the North East Divisional Community Safety partnership that manages most active and amber burglary offenders focussing initially in the strategic areas of concern that fall outside of the existing Integrated offender management system. A process has been drawn up using the principles of the Integrated offender management structure and support has been agreed with key partners including Youth Offending service, Signpost, Drugs offender Management Unit, Probation, Leeds Anti Social Behaviour unit, East North East Homes, Aire Valley Homes and North East Police Division. The work is now linking into the 100 Methodology at cluster level. The group meets on a monthly basis and looks at how best to manage individuals offending behaviour through offering support or taking enforcement action.

3.40 Neighbourhood Management Tasking Key Achievements 2011/12

3.41 The eleven neighbourhood management tasking teams continue to meet six weekly and are still firmly embedded into agencies day to day business and members continue to attend and support meetings.

3.42 This is not an exhaustive list of activities but includes key achievements from each of the neighbourhood management tasking teams within the inner north east area

3.43 Burmantofts and. Richmond Hill

- Operation Champion deployed in the Cross Green area involving a number of different partner agencies.
- Established a pre-tasking meeting with local ward Councillors, neighbourhood policing team and Leeds City Council's Environmental Action Team to ensure better communication around crime and grime issues

- A set of environmental priorities have been established for the Tasking area which includes waste in gardens, dog fouling and bin yards.
- Burglary reduction project has continued to be supported by tasking partners
- A list of hotspot addresses have been produced which all tasking partners have been asked to focus attention on over the six weeks in-between tasking meetings, which has proved to be successful, as issues at these addresses have ceased or significantly improved.
- Self closers fitted to alleygates on Back Cross Green Lane.
- Ginnel mapping exercise has been carried out for both of the tasking areas to ensure that a programme is put in place to ensure that the areas are maintained.
- Operation Champion undertaken in the Ivy area which focussed on 'Don't Sit on the Fence' campaign – information distributed to households. Car crime packs given to local businesses. Community clean up undertaken with three skips provided. Five stop searches undertaken around waste carriers licences. Two witness statements provided re thefts of motor vehicles
- Community Clean up undertaken in Cross Green area – four skips filled and litter pick undertaken across the area.
- A bid was developed to go forward to Area Panel to carry out highways improvements to address parking / road safety issues on Stoney Rock Lane.
- Ongoing enforcement of DPPO across the Burmantofts area with particular attention being paid to Lincoln Green Square.
- Environmental Project put together to carry out improvements along Becket Street / Lincoln Green Road area including planters / flower beds / signage. £1,500 provided through Inner East Area Committee
- Premier Banqueting Suite – Multi agency approach undertaken to address issues at these premises. Burmantofts and Richmond Hill Neighbourhood Policing Team and Leed City Council Parking Enforcement worked together to carry out patrols to deal with car parking / vehicle obstruction issues, ENE Locality Team have undertaken enforcement action against various environmental issues at the premise, LCC Noise Team have also been dealing with local residents complaints regarding late night noise from the premises and the Neighbourhood Manager secured £6,150 for some improvements to prevent cars parking and driving over the pavements, which was a hazard to public safety.
- Letters have been distributed to Torre Green, Saville Green and Torre Gardens, to encourage residents report incidents of criminal damage to the Police, rather than waiting for visits from East North East Homes Officers. CCTV footage has been reviewed and Anti social behaviour warnings have been served by Leeds Anti social behaviour unit. To those whom have been identified

- Additional litter bins funded around the Nowells to address litter concerns raised by the Environmental Locality Team and PCSOs patrolling the neighbourhood
- Operation Champion – A crime prevention event was held at St Agnes Church Hall for the residents of the Shakespeares area.
- New locks have been fitted to Alleygates in the Glensdales to try and prevent further incidents of Anti social behaviour in this area. This was funded through ENEHL.
- Operation Champion - covering the Rookwoods, where there was a focus on speeding, along with the provision of a community clean up.

3.44 **Killingbeck & Seacroft**

- Eviction of a resident from Kentmere Avenue and tenancy enforcement against another tenant has addressed the issue of noisy, violent parties following numerous complaints of residents which necessitated police involvement on more than one occasion.
- Operation Champion - in partnership with Environmental Action team and Housing agencies to address metal theft in the locality. Four vehicle check sites were actioned across the day and a large number of vehicles were stopped and enforcement notices were issued regarding commercial waste.
- Reduction in fires being started on the Parklands Estate through Operation champion information gathering, Fire Service leafleting, Police, Housing and ASB action against local youths. The vulnerable area is now being fenced using funds secured from ENEHL Area Panel.
- Operation Champion has been conducted to target hate crime perpetrators and to reassure victims in the Parklands estate and Foundry Mill estate. Each operation involved Housing, Police, Leeds Anti-Social Behaviour Team and other agencies
- Target Hardening of 200 addresses has been funded through the Tasking budget in partnership with CASAC.
- An Operation Champion was conducted targeting the issue of Loan Sharks in the Killingbeck and Seacroft area. Houses throughout South Seacroft were visited by police in conjunction with ALMO staff and the National Loan Sharking Team advising of the dangers of lending money from unlicensed persons. LCC Licensing staff also contributed and visited every licensed premise in the area raising the profile of the issue and delivering beer mats publicising the helpline number.
- Environmental issues relating to litter at Black Shops, South Parkway, Seacroft have been addressed by the provision of more litter bins and the prosecution of offenders by the Environmental Action Team witnessed by local PCSOs to drop litter whilst on tasked patrol.
- Environmental issues relating to dog fouling on Wykebeck Valley Way, North Parkway, Seacroft have been addressed by an increase in visible patrols and the

prosecution of offenders by the Environmental Action Team Anti Social Behaviour issues caused by alcoholics drinking and defecating on the Village Green have been successfully addressed by joint partnership work to maximise criminal prosecutions and tenancy action against each offender. The main two offenders have been imprisoned for other offences

- Tenancy warnings enforced against 2 active burglary dwelling offenders
- ASB at Boggart Hill Shops tackled and offenders received Anti social behaviour warnings
- Two vulnerable Adults safeguarded in their home from further exploitation. Criminal Prosecutions and ASBO applications ongoing.
- ASB & Damage tackled in Parkway Towers with 20 prohibition notices served, two tenancy warnings issued and two further prosecutions for urinating in the lifts.

Gipton & Harehills

- Target Hardening of 200 addresses (Sash Jammers) has been funded through the Tasking budget in partnership with CASAC for the Harehills Area.
- Agreed £148.00 for additional railing panel to bridge gap between post and hedgerow at Back Chatworth Road alleygating.
- Land rear of 116 - 144 Roundhay Road, LS8 between Roundhay Road, Bayswater Road, Roseville Road. (Cross Roseville Road – problem solving with different sections of Leeds city council regarding environmental enforcement and pest control.
- Continue support to problem solving group re bin yards.
- Boundary Improvement works at two access points to Harehills Cemetery (South Farm Crescent and Brander Road) to improve security in the cemetery and reduce the risk of anti social behaviour. Works include removal of trees and vegetation and lowering of shrubs to improve vegetation, new gates and new 2m high fencing. Funded through area committee wellbeing funding - £20,652.
- New dispersal order implemented within Harehills as a result of the increase in Anti social behaviour. Area amended from previous dispersal order to include Harehills Park.
- Two successful multi agency operation champions in the Beeches and Ambertons have been carried out. The operations included visits to victims of Anti social behaviour and hate crime and perpetrators by police LASBT and Housing, confidence visits to repeat victims and the new build occupants, community clean up and youth service promotion for the area .
- To address the high NEET figure, a drop-in session for Igen has been agreed at Henry Barran Centre and increased outreach visits from Jobs and skills .

- A business plan to develop a training kitchen at Henry Barran Centre is currently being worked up by several agencies , including GIPSIL , Gipton Together and Zest .
- As reducing barriers to employment, reducing DWP claimants and increasing opportunities for training and employments is a priority for the Gipton ward , a NEET and worklessness working group I has been established in the East area .

3.45 **Thematic Sub Groups and Activities**

3.46 **Off Road Bikes /West Yorkshire Police**

3.47 The Inner East area committee (June 2011) contributed towards the lease costs to retain 2 motorcycles within the division for a 12 months period, The North East Police Division continued to fund the running costs such as fuel , specialist uniform and staff resources . The information below outlines the performance and some examples of successes in the area committee area

August 2011 October 2011

Stop searches: 9

Calls attended: 21

Section 59 warnings: 9

Vehicle seizures: 5

Arrests/Summons:6

Cannabis Warnings: 2

November 2011 January 2012

Stop searches: 14

Calls attended: 22

Section 59 warnings: 2

Vehicle seizures: 5

Arrests/Summons:5

Cannabis Warnings: 1

February 2012 April 2012

Stop searches: 7

Calls attended: 11

Section 59 warnings: 4

Vehicle seizures: 3

Arrests/Summons: 3

Cannabis Warnings: 1

- 3.48 Examples of work undertaken in response to calls and local priorities of anti-social behaviour are reported in the quarterly newsletter which is hand delivered to every home in the area and on the Neighbourhood Policing Team website.
- 3.49 The unit is prevalent along with Leeds City Council Riders at major events such as operation champions working with agencies such as warrants officers, Vehicle operator and services agency (VOSA), DVLA and housing. The unit also attend scout groups, youth clubs and schools to give inputs promoting the unit and preventative work. The unit has links with the Wykebeck Valley Way project in policing and supporting the project. We are utilised to search for and locate high risk missing persons in open ground and woodland and to assist in public order demonstrations such as the march from Lincoln Green to the city centre.
- 3.50 Below is one quote from the Neighbourhood policing website which advertises the good work undertaken and shows the vast reduction in complaints since the off road unit was reformed.
- 3.51 “The North East Leeds Off Road Unit, funded in partnership with your local councillors and working alongside Leeds Council Parks and Countryside Officers have reduced calls by a massive 45% compared to the same period in 2010. In 2010 we received 282 calls, this year we have received 157.”

3.52 **Examples**

- A call came in to the Neighbourhood Policing Team Office about a group inside East End Park taking turns riding a motorcycle behind the tennis courts. This was relayed straight to the Off Road Officer and following the route suggested into the park the group was ambushed. Their motorcycle was seized and destroyed.
- A speeding Berlingo Van caught our attention heading from Burmantofts Street. The driver was stopped outside Shakespeare Towers and found to have no licence. His van was seized and he has been fined and disqualified at court.
- Leeds Watch CCTV covers much of East End Following a review of footage showing a man riding an off road motorcycle local neighbourhood officers identified the rider. He has been interviewed and summonsed to attend court.
- A male from Tarnside Drive decided to cut across Fearnville Fields on his unregistered motorcycle and was intercepted by the off road unit. He had no licence and no insurance. His motorcycle was seized. The male received 9 points and a fine at court.
- Following a complaint that a male was riding on the pavement to park near Parkway Court officers from the Unit parked up on the Wykebeck Valley and waited. Like clockwork the young man pulled up by the flats, using the footpath and pedestrian stairs as access. Once officers pointed out where they had observed him from, the male quickly apologised. He was issued with a section 59 warning and if he rides on the footpath again his motorcycle will be seized.
- One of the many benefits of being on a motorcycle is that the sense of smell is more exposed. This extra sense was to the detriment of one driver on Boggart Hill who decided to drive around with a small quantity of potent cannabis in his glove box. He was pulled over and searched. On admitting possession of a class B controlled drug he was issued with a home office caution.
- Police presence has been increased in the area of the Limewood Industrial Estate following several reports of a male exposing himself to passing members of public. This meant that once a call came in officers from the neighbourhood policing team

and off road unit were quickly at the scene. The suspect had run into the woods but was unable to evade of the police off road motorcycle. He was arrested at the scene and following extensive enquiries by the local neighbourhood officers has been charged with several sexual offences and bailed to attend crown court.

- Following a report of a suspicious man trying door handles on Sandway, the off road unit were first on the scene. Thanks to the extra height advantage of the motorcycles officers were able to see over a garden wall and see the male crouched down trying to hide. He was detained at the scene and arrested on suspicion of burglary, he has been charged and bailed to attend court.
- A man cycled passed an off road officer smelling of cannabis heading across of the Fearnville fields. Usually a suspect on a mountain bike would be tricky to catch on foot or in a car but the off road bike had no trouble in bringing him to a stop. He was found to be in possession of a large amount of cannabis and was arrested on suspicion of possession with intent to supply. He was charged and bailed to attend court.
- Officers from the Seacroft Neighbourhood Policing Team tipped off the unit about a man riding along the grass verge on Kentmere Avenue without a helmet. The man was stopped on a red motorcycle and found to have no licence or insurance. As such the motorcycle was seized and the driver reported for summons. Further enquiries by officers from Wetherby Neighbourhood Policing Team revealed that this motorcycle had been stolen in a burglary the week before. The driver was given an early morning wake up call, arrested and several other items of stolen property were recovered. At court the man admitted burglary and handling stolen goods. He is currently remanded in custody.
- Officers responded to a complaint of a group of males riding a go-ped around Poole Crescent near to the community centre. Police Community Support Officers were first to the scene and alerted the off road officers to the group running off. They were detained on the next street. The driver was known to the officers as a disqualified driver. He was arrested and interviewed. He fully admitted the offences and was charged and bailed for court. At court he was fined and disqualified for a further 6 months.
- The unit responded to a report of a motorcycle being pushed along the Fearnville Fields. Although the number plate had been removed the specialist knowledge of the off road unit allowed them to identify the motorcycle as one stolen the day before from a burglary. The Yamaha YZF 125, valued at £3,000 was returned in good condition to its rightful owner. Fingerprints were recovered from the motorcycle and enquiries are on going.
- Residents of Kentmere Avenue had complained about a nuisance Quad being driven around the footpath and fields leading to North Parkway. As a result patrols were increased the Quad was caught. It was uninsured and the driver was unlicensed so it was seized and disposed of.
- Whilst on patrol on Askett Avenue officers sighted a well known burglar. He was stopped and checked and found to be wanted by the courts in relation to threatening behaviour. He was arrested and detained for court.
- Whilst on Patrol on South Parkway officers sighted a stolen motorcycle carrying a pillion passenger. The rider had failed to spot the police motorcycle and was surprised to be cornered on Foundry Mill Terrace. He and the pillion passenger were arrested on suspicion of theft of the motorcycle. The motorcycle had been used in a number of smash and grab theft from motor vehicle offences in and around Seacroft. The two males were detained overnight and questioned regarding the offences before being charged and bailed to attend court. The Yamaha was seized to be returned to its rightful owner.

- Many of the streets in Seacroft are quiet and very wide which makes them popular with driving instructors from all over the local area. On the 19th of November whilst on patrol on Moresdale Lane officers from the off road unit observed a driver of a Fiat Punto showing a complete lack of courtesy and thought for a learner driver performing a three point turn. Rather than waiting for the learner to complete the manoeuvre the Punto driver fully mounted the pavement and used the footpath as a road to get passed the learner. He clearly had not paid much attention in his driving lessons as he failed to check his mirrors before completing the manoeuvre and spot the police motorcycle behind him. He was stopped and having been formally warned only the previous month his car was seized under Section 59 of the Police Reform Act for and he was reported for careless and inconsiderate driving.. He has since attended a Driver Improvement Scheme course.
- The Wykebeck Valley Way continues to be a popular route for walkers and cyclists and is heavily patrolled by the off road unit as use of motor vehicles is strictly prohibited. A man was stopped riding his Honda CRF450R motorcycle on the Way near to Parkway Towers. As he was unlicensed and uninsured the motorcycle was seized and the driver reported for summons. He was fined and disqualified at court.
- Whilst on patrol in the Osmondthorpe area two males were spotted on a Yamaha WR125 motorcycle. They abandoned the motorcycle and made off on foot. The motorcycle which is valued at over £3,000 was recovered and found to have been stolen two days before. It was returned to its rightful owner and examined for fingerprints to identify the suspects.
- Staff from a store on Torre Road reported a shoplifter had made off after being seen stealing by staff. Officers from the off road unit were guided in by CCTV and detained the suspect on Harehills Lane. The stolen goods were recovered and the suspect was arrested.
- A known burglar was stopped on Brander road riding his brothers motorcycle. Whilst he was licensed and insured checks revealed that his rear tyre was lacking any tread. He also smelt strongly of cannabis and was searched. He was in possession of cannabis. He was arrested at the scene and charged and bailed to attend court. He was also issued with 3 points and a £60 fine.
- Following a complaint of a group of males riding a quad at speed along St Wilfreds Crescent a black 150cc Quad was recovered for having no insurance.

3.53 Harehills Section 30 Dispersal order

3.54 As a result of increases in recorded anti social behaviour and complaints from local residents it was agreed that a section 30 Dispersal order would be implemented during the summer period , the order commenced on 1st August 2011 up until 30th October 2011 , on review it was agreed to extend covering a larger area to incorporate displacement issues that had arose. The order ceased on 4th December 2012 .

3.55 Young people who were congregating on street corners lived within a very close proximity of there households; this made it increasingly difficult to police as officers were effectively asking young people to disperse from their own streets or nearby. Officers also tried a series of joint patrols with local representatives from the community and Mosques; this initially had a positive impact on getting the message of acceptable behaviour out to the community in particular parents however the joint patrols could not be sustained through the summer months.

- 3.56 The local policing team took an alternative approach when using the dispersal powers. Officers opened a nearby porta-cabin on Hovingham Avenue to consult with young people and allow a place for young people to socialise away from the streets; this started a theme of positive dialogue and interaction between the police and young people. Any young people congregating on local streets were diverted to the porta-cabin and local park where police could monitor behaviour. There was a general feeling within the community that little effort was made to provide meaningful activities for young people which had an impact on anti-social behaviour and crime. Officers set up some local diversionary activities for young people one of which was a series of evening cricket sessions using a tennis ball on the Hovingham School playground
- 3.57 Such was the success of the scheme that after two weeks between 50 and 60 local youngsters aged between 10 - 20 were attending the sessions, which were based at Hovingham Primary School and ran until 10pm. Building on the popularity of the initiative, the police joined forces with a local community group called CATCH and obtained some additional funding from the Proceeds of Crime Grant Scheme. This helped to provide equipment including bats, pads and helmets as well as the initial marking out of a cricket pitch on the school field. Ensuring local youngsters interest in the cricket sessions continued beyond the summer, the police initially looked to link in with established local cricket clubs but many of these had no capacity and it was difficult for those involved to reach clubs out of the area. Struggling to see how the project could be taken forward, officers approached Gledhow Sports Club, who, for many years, had success with senior sides but no junior teams. The club welcomed the idea of starting a junior section and Gledhow Cricket Club is now the home of an under 15s side and under 17s section; both which have their origins with the Summer Cricket Programme in Harehills.
- 3.58 CATCH has presented a real opportunity for some long term solutions to be developed. In relation to crime and anti social behaviour, the forging of positive relationships with schools, parents and young people in the Harehills area are breaking down the traditional perception of the police as an “outsider” in the community and contributing to a positive change in community attitude. The cricket is serving to challenge the view and demonstrating that when activities are provided which the young people are genuinely interested in, they are prepared to engage.
- 3.59 **CCTV – Leeds watch**
- 3.60 Leedswatch provides a monitoring service for public space surveillance cameras covering open spaces across Leeds. The CCTV control room is staffed, and cameras are recorded 24 hours per day, 365 days a year. The service also provides two mobile CCTV vehicles for deployment within communities across Leeds.
- 3.61 The main objective of the service is to reduce crime and the fear of crime through the use of CCTV technology, leading to improved crime prevention, and an increase in the detection and prosecution of offenders.
- 3.62 CCTV is one of a number of Service functions delegated to Area Committees. The Area Committee’s role in relation to this function is to ‘maintain an overview of the service in the Committee area and receive regular information about it.

- 3.63 The LeedsWatch service works in partnership with a large number of internal and external partners such as; Urban Traffic Control (UTC), Emergency Planning, Leeds Anti-Social Behaviour Team (LASBT), West Yorkshire Police, WY METRO and other Local Authorities across the West Yorkshire sub-region
- 3.64 There are currently a total of 53 public space surveillance CCTV camera's monitoring the Inner East Committee Area, via the Central CCTV Control Room at Middleton, they are located in the following areas as follows: Fraser Street- Torre Road (2) - York Road - Vinery Terrace - Temple View - Richmond Hill - East Park Road - East Park View - Ivy Street –East End Park – East Park Parade – Copperfield Grove – Cross Green Lane – Pontefract Lane (3) – Halton Moor Avenue (2) – Felnax Close – Newmarket Close – Cross Green Close – Cross Green Approach – Knowsthorpe Lane (2) – Cross Green Way – Knowsthorpe Way - Knowsthorpe Gate – Knowsthorpe Road – Nowell Avenue – Compton Road – Ashley Road - Chatsworth Road – Torre Drive East – Torre Drive West – Torre Mount - Bayswater Road – Beck Road – Shepherds Lane – Banstead Terrace West -Harehills Road – Markham Avenue – Bankside Street – Newmarket Close – Black Shops (Front and Back) – Bellebrookes – Crossgates - Riverside (4) – East park Drive (2)
- 3.65 Within the last 12 months the mobile vans have been deployed for a total of 4 months within the Killingbeck Policing Area and patrols have been deployed in specific areas highlighted by the police specifically in relation to identified crime 'hot spots'. The vehicles are evenly deployed throughout the year between the three policing divisional areas. The deployment of the mobile vans is co-ordinated by the police.
- 3.66 The East (Inner) Area Committee funds the Burmantofts cameras (4), black Shops and the Bellebrooke camera:

Camera Location	Ward	Maintenance	Monitoring	Line Rental	Total revenue cost per camera
South Parkway (Front of Black Shops)	Killingbeck & Seacroft.	£500	£500	N / A	£1,000
Kentmere Ave (Rear of Blacks shop)	Killingbeck & Seacroft.	£500	£500	N / A	£1,000
Bellbrooke Street	Gipton & Harehills	£500	£500	N / A	£1,000
Burmantofts 4 camera		£2000	£2000	£3112	£7112

- 3.67 The LeedsWatch service this year has undertaken a critical role in the delivery of the Leeds Burglary Reduction programme, assisting with the identification and detection of offenders using the City wide LeedsWatch network, mobile CCTV vans and the West Yorkshire Police Automatic Number Plate Recognition (APNR) system to detect cross boundary offenders and supporting city wide and locality based operations.

- 3.68 The Leedswatch service this year has undertaken a critical role in the delivery of the Leeds Burglary Reduction programme, assisting with the identification and detection of offenders using the City wide Leedswatch network, mobile CCTV vans and the West Yorkshire Police Automatic Number Plate Recognition (APNR) system to detect cross boundary offenders and supporting city wide and locality based operations.
- 3.69 In total within the last 12 months there have been a total of 216 arrests recorded between April 2011 and March 2012 within the police North East Policing Area, covering a wide range of offences such as drugs, burglary, criminal damage, arson, assaults, robbery, theft including theft from motor vehicles, offensive weapon, public disorder and drink driving offences.
- 3.70 Within the Inner East Committee Area there have been a total of 197 arrests recorded between April 2011 and March 2012 in relation to a wide ranging number of offences as listed above.
- 3.71 CCTV footage has been requested in relation to 1757 incidents within the North East Leeds Policing area for a various number of offences which provides evidence in relation to the criminal investigations relevant to identification of suspect(s) and a total of 1198 incidents relate to the East (Inner) Committee Area.
- 3.72 Improving the Out of Hours Noise Nuisance service – Noise nuisance is a major cause for concern across the city. This service was transferred from Environmental Services April last year. Work is still taking place to look at how closer working can be developed with the new ASB casework teams to deal with persistent offenders and to work in liaison with Customer Access and Performance in providing additional staff to assist in the logging of such Out of Hours Noise Nuisance Calls.
- 3.73 Supporting the city's most vulnerable residents is also a priority. The Leedswatch service is now responsible for providing a first response to Care Ring alarms. On call 24 hours a day, 7 days per week, this service responds to alarms from mainly elderly clients who may have fallen or find themselves in need of support. Officers attend to the alarm call and contact emergency services, family members or other appropriate individuals, staying with the client to provide support and re-assurance until further help arrives. Improving the information and intelligence we provide to Leedswatch customers is a key priority for the service. We are reviewing how this data is recorded, in the way in which we can provide accurate information to service users, to provide more detail and improve the services analytical and intelligence capacity.
- 3.74 Leedswatch service is now responsible for the delivery of a number additional service responsibilities. In order to ensure that the service is making the best use of its resources, a full service restructure has now commenced with a view to offering best value for the department. In particular discussions are still taking place with the Anti-Social Behaviour Teams, Environmental services, West Yorkshire Police and the ALMOs to look at how the various services can better linked together to improve service delivery, collate accurate information for service users and to provide a more pro-active response to issues of public concern, through improved collating of data / information and intelligence sharing between agencies.
- 3.75 **Installation of CCTV South Seacroft**
- 3.76 A feasibility study was undertaken to identify specific areas/streets of concern for crime and antisocial behaviour in the south seacroft area (covered by the lower super

output areas EO1011667, E01011663) . The crime analysis identified the hot spot areas and recommended potential locations for CCTV. The North East Divisional community safety partnership have worked closely with East North East homes, east north east homes area panel , west Yorkshire police and local ward councillors . We have been successful in identifying capital funding and 5 years revenue costs from partner agencies to install 9 cameras. The scheme will be managed by and delivered by Safer Leeds and become part of Leeds City Councils Leeds watch scheme. It is anticipated the scheme will go live in June 2012.

3.77 **Hate Crime MARAC**

3.78 Co-ordinated multi agency working is recognised as the most effective response to all issues of crime and disorder, including agency responses to the victims and perpetrators of hate crime. The hate Crime Multi-Agency Risk Assessment Conference (HC MARAC) continues to meet monthly . The overall objectives of the group is to:

- Support and assist victims of hate crime in order to protect them and ensure that they are not re-victimised.
- Ensure that effective co-ordinated multi agency enforcement action is taken against perpetrators of hate crime to prevent their re-offending and to ensure successful prosecution outcomes at Court.
- Contribute to the “Hate crime reduction agenda in Leeds”.

3.79 Overall the Inner East area has shown a decrease of 13.58% in hate crimes reported, and this equates to a reduction of 22 crimes - a total of 140 crimes reported compared to 162 during 10/11

3.80 **Domestic Violence MARAC**

3.81 The North East Divisional MARAC continues to meet monthly to develop multi-agency interventions to support victims of domestic violence. Overall a very successful year in relation to reduction of repeat victimisation of cases managed through the MARAC.

3.82 **Leeds Anti social behaviour Team**

3.83 Prior to implementation of the multi-agency Leeds Anti-social behaviour Team (LASBT) Anti Social Behaviour was responded to across a range of agencies each working to differing thresholds and service standards making direct comparison of city wide performance data difficult.

3.84 Customer satisfaction with the case outcome is influenced by many factors including the victims own expectations, and the complexity of the case. LASBT procedures are customer focused. For example, in supportively managing victim expectations, exploring potential solutions, and identifying and responding to individual needs. LASBT works to resolve cases at the earliest opportunity. Customer feedback suggests that the process is working. Comments include *‘efficient and professional, response received’* from an *‘invaluable service’*.

3.85 Customer satisfaction data is collated at case closure through customer (victim) surveys, which seek customer satisfaction levels in relation to various aspects of the service (please refer to chart below)

City Wide - Annual Figures	2008/9	2009/10	2010/11	2011/12
% Satisfaction with the case outcome.	61.6%	66.1%	60.3%	75.0%
% Satisfaction rating with overall service	72.2%	73.7%	70.4%	81.3%

- 3.86 LASBT data for 2011/12 has been drawn from on a total of 540 surveys from 1562 named victims (an overall response rate of 34.6%) giving a 95% confidence level with a 3.41% confidence interval.
- 3.87 When compared with former ASBU survey responses, there have been significant improvements as a result of this joined up approach to ASB service delivery. LASBT data collated during 2011/12 will form the baseline from which future performance targets can be set. It is anticipated that performance data with regards to satisfaction in relation to outcomes and overall service will be available at ward level shortly.
- 3.88 The charts below outline the number of enquiries received, new cases opened and a summary of legal outcomes

LASBT Enquiries Received 2011/12	
Ward	Grand Total
Burmantofts & Richmond Hill	260
Killingbeck & Seacroft	262
Gipton & Harehills	220

LASBT New Cases Opened 2011/12	
Ward	Grand Total
Burmantofts & Richmond Hill	146
Killingbeck & Seacroft	133
Gipton & Harehills	126

Ward	Overall, how satisfied were you with the service?					Grand Total	% 'Satisfied or 'Very Satisfied
	Very Satisfied	Satisfied	Neither Satisfied nor Dissatisfied	Dissatisfied	Very Dissatisfied		
Burmantofts and Richmond Hill	34	6	2		4	46	87.0%
Gipton and Harehills	22	15	1	1	3	42	88.1%
Killingbeck and Seacroft	18	13		2	4	37	83.8%
Grand Total	74	34	3	3	11	125	86.4%

3.89 Overall Performance of North East Divisional Community Safety Partnership

Reduce Crime and its Impact					
Reduce the level of Total Recorded Crime	D/I	22,590	▼	24,693	Down 8.5% (2103 fewer crimes) compared with the same period last year
Reduce the level of Serious Acquisitive Crimes	7,169	5,745	▼	7,169	Down 20% (1424 fewer crimes) compared with the same period last year
Reduce the level of Domestic Burglary	3,434	2,946	▼	3,615	Down 19% (669 fewer crimes) compared with the same period last year
Reduce the level of Violent Crime	D/I	3,845	▼	4,305	Down 11% (460 fewer crimes) compared with the same period last year
Reduce the level of Assault with Injury	D/I	1,526	▼	1,741	Down 12% (215 fewer crimes) compared with the same period last year
Effectively Tackle ASB					
Reduce the proportion of residents who believe that ASB has increased in their local area	13.1%	12.0%	▼	12.4%	Variation from target Trajectory -1.14%
Reduce the proportion of repeat locations for ASB	D/I	11.0%	▼	11.0%	To Feb-2012, 20 fewer repeat locations when compared with the same period last year
Improve the percentage of customers/victims happy with the time taken to respond to their enquiry (LASBT 4 week survey)	B/Y		▲		Divisional breakdown from LASBT under development
Improve the percentage of customers/victims satisfied with the case officers investigation to date (LASBT Closed Case Survey)	B/Y		▲		
Improve the percentage of customers/victims that were satisfied with the case outcome (LASBT Closed Case Survey)	B/Y		▲		
Improve the percentage of customers/victims that were satisfied with the overall service (LASBT closed survey)	B/Y		▲		
Improve Safeguarding & Reduce Vulnerability					
Reduce the repeat victimisation rate for MARAC domestic violence cases	19%	11.0%	▼	11.0%	Rolling 12 months to Feb, 193 cases, 22 repeats

YTD = year to date

PYE = predicated year end

D/I = diagnostic indicator, no target set as contributes to a set indicator (proxy measure)

B/Y = baseline year

PY= Rolling 12 month previous year

3.90 Crime & ASB: 2011/12

3.91 Overall a really successful year in relation to recorded crime and Anti social behaviour. Across the Inner East area committee there has been an overall reduction of 950 recorded crimes and 1978 less anti social behaviour calls .

3.92 The below statistics show crime and anti-social behaviour from 1st April 2011 until March 31st 2012 by ward areas compared to the same dates for previous year.

3.93 Burmantofts and Richmond Hill

CRIME	2010/11	2011/12	Difference	% Inc / Dec
AGGRAVATED TWOC	5	9	4	80.00
ARSON	35	23	-12	-34.29
BURGLARY DWELLING	574	397	-177	-30.84
BURGLARY OTHER	159	194	35	22.01
CRIMINAL DAMAGE - BUILDING NON DWELLING	44	49	5	11.36
CRIMINAL DAMAGE - DWELLING	295	242	-53	-17.97
CRIMINAL DAMAGE - MOTOR VEHICLE	233	202	-31	-13.30
CRIMINAL DAMAGE - NON SPECIFIC	80	62	-18	-22.50
INTERFERENCE WITH VEHICLE	33	105	72	218.18
ROBBERY	82	68	-14	-17.07
THEFT FROM PERSON	37	55	18	48.65
THEFT FROM VEHICLE	505	293	-212	-41.98
THEFT OF VEHICLE	34	33	-1	-2.94
TWOC	23	23	0	0.00
VIOLENT CRIME	574	523	-51	-8.89
Grand Total	2713	2278	-435	-16.03

ANTISOCIAL BEHAVIOUR CALLS	2289	1581	-708	-30.93
HATE CRIME	42	41	-1	-2.38

Public Confidence	March 2011	March 2012	
Confidence in local policing	53.6%	51%	+ 2.6%
Overall Satisfaction	79.0%	86.3%	+ 7.3%
% of residents who think ASB has increased	24.2%	18.1%	- 6.1%

3.94 Gipton and Harehills

CRIME	2010/11	2011/12	Difference	% Inc / Dec
AGGRAVATED TWOC	7	10	3	42.86
ARSON	38	34	-4	-10.53
BURGLARY DWELLING	381	371	-10	-2.62
BURGLARY OTHER	184	150	-34	-18.48
CRIMINAL DAMAGE - BUILDING NON DWELLING	44	40	-4	-9.09
CRIMINAL DAMAGE - DWELLING	291	279	-12	-4.12
CRIMINAL DAMAGE - MOTOR VEHICLE	242	217	-25	-10.33
CRIMINAL DAMAGE - NON SPECIFIC	55	63	8	14.55
INTERFERENCE WITH VEHICLE	20	32	12	60.00
ROBBERY	88	88	0	0.00
THEFT FROM PERSON	72	114	42	58.33
THEFT FROM VEHICLE	350	253	-97	-27.71
THEFT OF VEHICLE	37	29	-8	-21.62
TWOC	24	29	5	20.83
VIOLENT CRIME	734	702	-32	-4.36
Grand Total	2567	2411	-156	-6.08

ANTISOCIAL BEHAVIOUR CALLS	2843	2225	-618	-21.74
HATE CRIME	72	61	-11	-15.28

Public Confidence and user satisfaction in the Police

Public Confidence	March 2011	March 2012	
Confidence in local policing	43.7%	47.9%	+4.2%
Overall Satisfaction	81.9%	85.5%	+3.6%
% of residents who think ASB has increased	20.3%	22.8%	+2.5%

3.76 Killingbeck and Seacroft

CRIME	KILLINGBECK & SEACROFT			
	2010/11	2011/12	Difference	% Inc / Dec
AGGRAVATED TWOC				
ARSON	5	5	0	0.00
BURGLARY DWELLING	35	32	-3	-8.57
BURGLARY OTHER	433	355	-78	-18.01
CRIMINAL DAMAGE - BUILDING NON DWELLING	310	280	-30	-9.68
CRIMINAL DAMAGE - DWELLING	52	58	6	11.54
CRIMINAL DAMAGE - MOTOR VEHICLE	274	225	-49	-17.88

CRIMINAL DAMAGE - NON SPECIFIC	271	267	-4	-1.48
INTERFERENCE WITH VEHICLE	68	75	7	10.29
ROBBERY	21	15	-6	-28.57
THEFT FROM PERSON	30	22	-8	-26.67
THEFT FROM VEHICLE	31	35	4	12.90
THEFT OF VEHICLE	187	127	-60	-32.09
TWOC	67	31	-36	-53.73
VIOLENT CRIME	29	21	-8	-27.59
Grand Total	541	447	-94	-17.38
	2354	1995	-359	-15.25
ANTISOCIAL BEHAVIOUR CALLS				
HATE CRIME	2502	1850	-652	-26.06
	48	38	-10	-20.83

3.77 Public Confidence and user satisfaction in the police

Public Confidence	March 2011	March 2012	
Confidence in local policing	57.7%	58.2%	+0.5%
Overall Satisfaction	77.4%	87.6%	+10.2%
% of residents who think ASB has increased	14.9%	13.7%	- 1.2%

4 Corporate Consideration

5 Consultation and Engagement

5.1 The North East Divisional Safety partnership works in partnership with the voluntary and community sector and when necessary carries out statutory consultation as appropriate

6 Equality and Diversity / Cohesion and Integration

6.1 Consideration is given to the equality impact of delivering the Safer Leeds strategy across North East Police Division . Where a negative equality impact is identified action will be taken to mitigate the impact or risk.

7 Council policies and City Priorities

7.1 The North East Divisional community safety partnership delivers directly against The Safer and Stronger Communities Board Partnership plan 2011-2015

8 Resources and value for money

8.1 The work undertaken by the DCSP is underpinned by maximisation of resources through effective partnership work

8.2 Legal Implications, Access to Information and Call In

8.3 There are no exempt or confidential information contained in this report

- 8.4 There are no legal implications associated with this report
- 8.5 There are no key decisions associated with this report , so it is not subject to call in

9 Risk Management

- 9.1 There are no major risks associated with the content of this report

10 Conclusions

- 10.1 Overall a very successful year for North East in relation to overall crime reduction , public confidence and increased performance and perceptions in dealing with anti social behaviour . The DCSP will continue to prioritise burglary dwelling during 2012/13 to ensure reductions are sustained and further improvements are made.

11 Recommendations

- 11.1 Members are asked to continue supporting the Divisional Community Safety Partnership in relation to prioritising and tackling Burglary Dwelling during 2011/12 through partnership work at neighbourhood level.

12 Background documents ¹ Safer Leeds OBA Burglary Year End Report

- 13.1 Divisional community safety quarterly highlight reports

¹ The background documents listed in this section are available for inspection on request for a period of four years following the date of the relevant meeting. Accordingly this list does not include documents containing exempt or confidential information, or any published works. Requests to inspect any background documents should be submitted to the report author.

North East Leeds

April 2012

Confidence & Satisfaction

Performance Indicator	Target
Improve Confidence in Local Policing	62.4%
Improve the overall satisfaction rate of service users	87.6%
Improve the overall satisfaction rate for BME Service Users	84.1%
Improve the overall satisfaction rate for White Service Users	89.8%
<i>Emergency Response incidents (15 minute standard)</i>	
<i>User Satisfaction with being kept informed</i>	
<i>Public Confidence for BME residents</i>	
<i>Public Confidence for White residents</i>	
<i>Average number of days taken to locally resolve complaints.</i>	

Local Policing

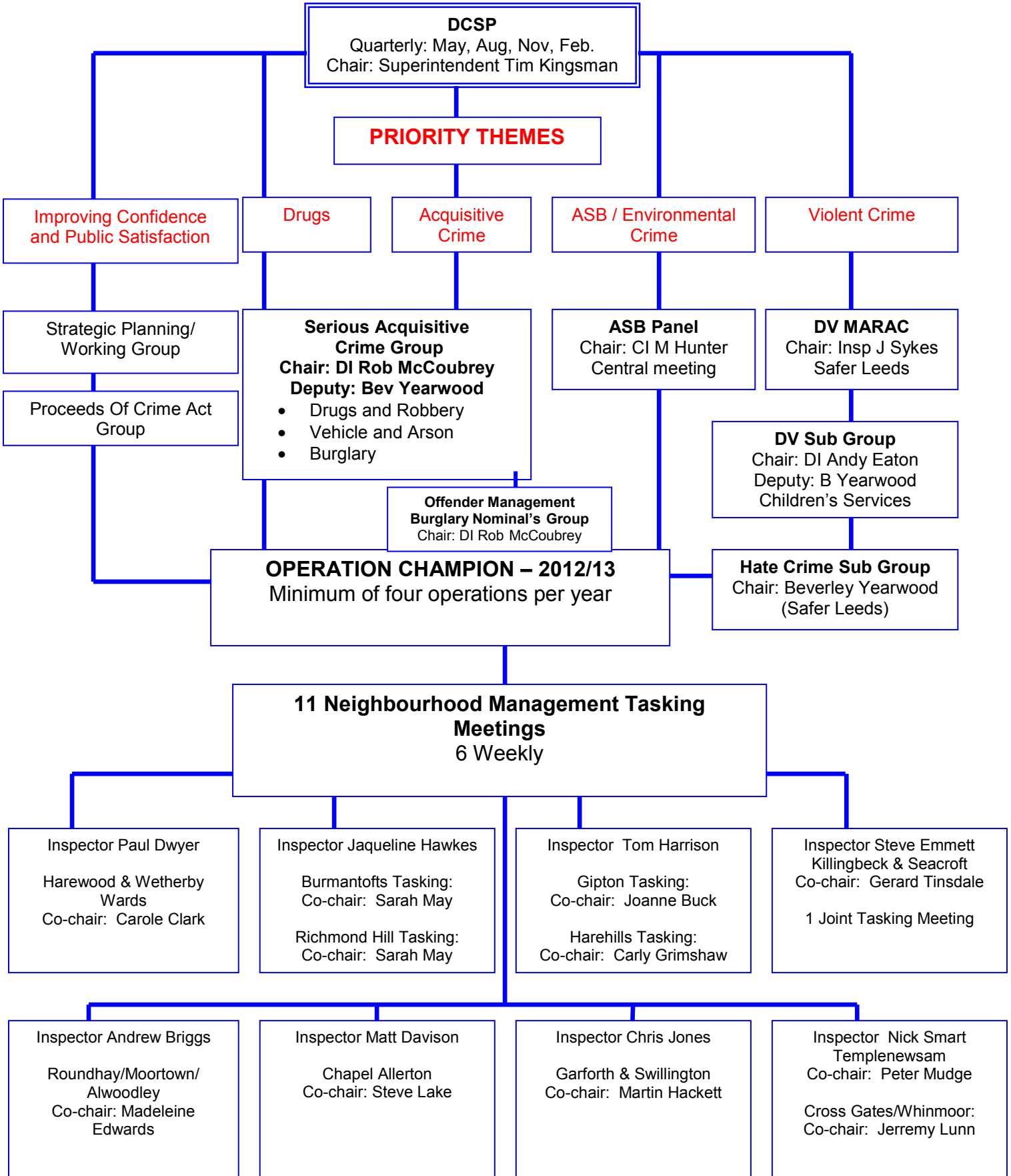
Performance Indicator	Target
Continue to tackle the level of acquisitive crime	5512
Reduce perceptions of ASB in local area	11.9%
Burglary Dwelling recorded	2713
<i>Assault with injury recorded</i>	
<i>Total Crime recorded</i>	
<i>ASB recorded</i>	
<i>Metal theft recorded</i>	

Protection of the Public from Serious Harm

Performance Indicator	Target
Continue to tackle the level of serious violent crime	83
Improve the repeat victimisation rate for domestic violence	39.9%
Stabilise the sanction detection rate for serious sexual offences	29.5%
<i>Domestic Violence Attrition</i>	
<i>Repeat offending rate for domestic violence</i>	

Appendix B

North East Divisional Community Safety Partnership



Appendix C

Gipton and Harehills				
POCA Ref	Date	Brief Description	Organisation	Amount Paid
276	15/02/2011	STAR Story Telling and Reading - Story time for preschool children and their carers with the aims of encouraging parent to child interaction: fostering a love of books for the children and also helping the parents with English.	Bankside Primary School	£250
293	22/03/2011	ALO Creative card making sessions - to buy materials for fortnightly sessions 7pm - 9pm.	ALO TRA - already been paid but requested new project as other one failed - Gave Stan Permission to spend the money 16/6/11	£250
333	19/05/2011	Think it through, stay safe Women's DV leaflet - Women at DV support and a education group have devised a leaflet discussing their feelings thoughts and behaviours when they come across a violent ex partner. We would like to print the leaflet and include current DV support contact numbers.	Women's Health Matters	£250
382	24/11/2011	Afghan Community Group - funds required to help the centre purchase some small portable heaters for their community centre and portable football nets for the children to play football.	Afghan Comm / PC Davide Perry (WYP)	£250
383	28/11/2011	Environmental Improvements at Wykebeck Woods - Plant materials to extend and thicken hedgerow at Wykebeck Way to deter burglars at adjacent properties (Parks and Countryside will be carrying out works).	Leeds City Council Parks and Countryside Services	£250
389	15/12/2011	Community Garden - Opening Gala and Community Engagement for New Community Garden at Shine w/c March 2012. Event would include entertainment, food, craft making.	Harehills CIC (dba Shine)	£500
393	23/12/2011	Football in the Community Programme - CATCH have team up with Leeds United to deliver football training in the Harehills area one night a week for 9 - 13yr olds and one night for 14yrs+.	Community Action to change Harehills	£500
401	12/01/2012	Gipton together - enabling children/young people to showcase their learning by putting on two evening performances for their parents and the wider community.	Gipton together	£500
406	23/01/2012	Girls exercise classes - exercise and boxercise classes for young females in LS9. The aim is to work with SGT coulter and attract these by offering fitness classes.	East Leeds Rugby club	£250
407	27/01/2012	International Women's Day - awaiting details	Zest health for Life	£250
419	09/02/2012	East Leeds Mini-basketball Link Project - encourage basketball and print t-shirts	Claude Bandawe	£250
424	24/02/2012	United Afghan Community - formed in 2011, need to purchase a projector and screen for use in the centre.	Mohammed Feroz	£250
426	24/02/2012	Unity Through Diversity - celebration for Kurdish New Year on 21st March - music, food, drinks and education on Kurdish culture.	Rashid Tamer	£250

Burmantofts and Richmond Hill**Killingbeck and Seacroft**

POCA Ref	Date	Brief Description	Organisation	Amount Paid
296	22/03/2011	Gardening Scheme – To tidy gardens for people over 60 twice a year. To help prevent people being identified as older people and help stop bogus callers / distraction burglary.	Burmantofts Senior Action	£250
297	22/03/2011	Day Trip to Bridlington - 14th June 2011 a 49 seater coach will be taking older people and their carers to for a day trip to Bridlington.	Burmantofts Senior Action	£152
311	08/04/2011	Shakespeare Primary School Fun Day - Parents have fundraised and worked hard towards a fun day for the school community however extra funding would provide extra activities.	Shakespeare Primary School	£240
318	04/05/2011	Cross Green Environmental improvements - To provide contribution towards 3 benches on the block paving area on Cross Green Lane / Knowsthorpe Crescent. Summer 2011 (6 week delivery wait for them) This will tie in with the planters being completed hopefully.	Cross Green Residents Group	£291
329	18/05/2011	Lark in the Park - A family day for residents in East End Park, Cross Green and Richmond Hill areas on Saturday 23rd July. 2011. This is the third year this event has taken place in East End Park. It will include races, art workshops, children's games and sporting activities.	Friends of East End Park	£250
335	23/05/2011	Community Day - Free Community day open to all the community Saturday 20th August 2011.	St Agnes United Church	£250
341	30/06/2011	Live On the Drive - this is an event held on East Park Drive for people of all ages. Activities will include street hockey, inflatable's, DJ, dance and graffiti workshops. This is a partnership event by Youth Service, Extended Services, WY Police, Area Management and Community Unity	Community Unity	£250
363	31/10/2011	Santa trip to Northern College - 10th December, I am planning to take families to see Santa at Northern College. They will receive presents and write to Santa and receive a reply. The children can feed the reindeers.	Zest Health for Life	£245
366	31/10/2011	Lord Mayors Tea Party and Trip around lights for older people/Warmth & Wellbeing Day - Wed 9.11.11 11:00am-14:00pm. Info day aimed at elderly, vulnerable, disadvantaged and all community. Info given on fuel poverty, fire safety, policing, welfare. Also to take older isolated people to the L. M Tea Party and around the lights.	Richmond Hill Elderly Action	£130
381	21/11/2011	Personal Lockers for attendees of centre -to purchase 3/4 door lockers for storage of children's belongings	The Donovan S Webster Training Centre	£246
415	02/02/2012	Active Citizens in Chapeltown - jointly run project with deen enterprises/CYDC to bring sections of Chapeltown Community together to provide driving tuition for 17-25 yr olds.	Together for Peace	£500
416	02/02/2012	International Women's Day event - football match, cooking, food , music, HIV and sexual health information.	Women's Health Matters	£250

POCA Ref	Date	Brief Description	Organisation	Amount Paid
309	08/04/2011	Seacroft Youth Football - 5 a side youth football tournament for 15-18 year olds. This will start at the Seacroft gala on 2/7/11 but will have the scope to become a youth project in its own right	Leeds 14 Trust	£250
324	18/05/2011	Lets Play Family Event for National Family Week at Denis Healey Centre - The Family fun day is aimed at children, young people and families in the Seacroft south/ foundry Mill area, where we presently facilitate free open access at the Denis Healey Centre, providing opportunities for children and young people aged 5- 13yrs to engage in a variety of activities. This includes sports, arts, dance, cooking, chance to meet with friends and general play. We have engaged with children through mobile play sessions in this area for the past two years, and since starting the provision at DHC this January, we have 95 children registered with an average attendance of 35 a session.	Feel Good Factor	£250
327	18/05/2011	Edinburgh Bicycle Co-op bike maintenance - 8 hr bike maintenance course with certificate.	Leeds Youth Service	£245
330	18/05/2011	Denis Healey Centre - Saturday Free runners Group - A 10 week free running introduction course for young to learn the new cult craze. Changed to: Inner east family play day	Leeds Youth Service	£250
337	02/06/2011	Visit to Holocaust Museum Student of David Young Academy - to assist teaching staff of the DYCA to promote inter racial harmony and demonstrate the consequences of not doing so in the starkest way. The group will visit the holocaust museum which is a full days event.	Council of Christians and Jews	£250
348	02/08/2011	Purchase of a bingo machine for luncheon club - elderly residents	North Seacroft Good Neighbours Scheme	£217
351	02/08/2011	Brooklands Towers Community Garden - 2 benches, table and planters for outside patio area	Brooklands Towers Tenants and Residents Association	£250
355	02/08/2011	Seacroft Falls Prevention - Falls Prevention event during Sept 2011 for older people incorporating a slipper exchange and facilitating referrals to appropriate services.	LCC - Health and Well-bing Team	£240
370	03/11/2011	Whinmoor Juniors F. C Under 13's - Whinmoor Juniors under 13's (New Team) involving 16+ boys from surrounding areas 5th June 2011 - ongoing.	Robin Cartwright	£250
385	08/12/2011	Leeds BMX Club - help to purchase some new safety training equipment - cycling helmets, protective pads, gloves and drinks bottles.	Leeds BMX Club	£500
408	27/01/2012	Denis Healey Urban Arts Project - we are designing a wall art which will brighten up the run down sports hall and will also be creating a legal graffiti wall within the centre.	Princess Trust based at Deacon House	£500
428	05/03/2012	Whinmoor FC under 14's - to buy footballs, training bibs, water bottles, first aid kits and first aid training.	Whinmoor Junior Football Club	£250